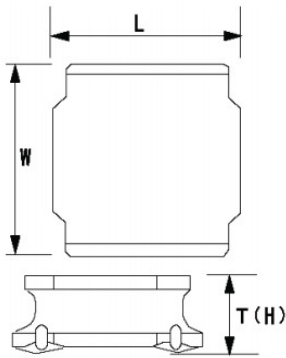


## SMD Power Inductors TL-5040SG-100M 4.9 x 4.9 x 4.1mm

### Electrical Specifications(25 °C)

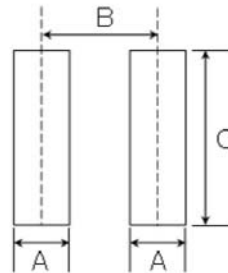
- ④ Inductance(Ls)@100KHz,0.1V : 10 uH±20%
- ④ Rated Current - Saturation Current : 2300mA
- ④ Rated Current - Temperature Rise Current : 2100mA
- ④ DC Resistance(20°C) : 0.0728 Ω Max
- ④ Avg. of DC.Resistance : 0.056 Ω
- ④ Self-resonant Frequency : 18MHz Min
- ④ Operating temperature : -25°C to +120°C

### Dimensions : mm



L	W	H
4.9±0.2	4.9±0.2	4.1 Max

### Recommended Land Patterns



A	B	C
1.5	3.6	4