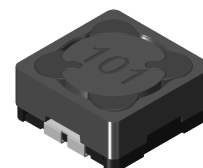
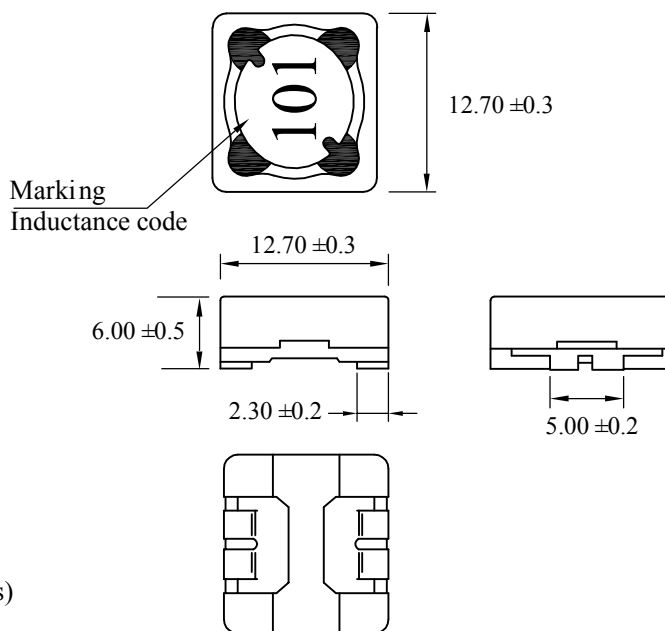




SHIELDED POWER INDUCTOR TL1206SG

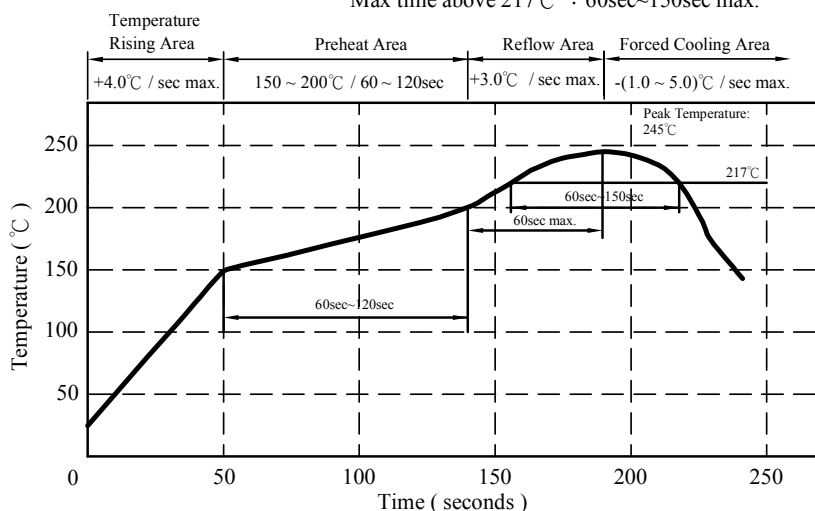


- ⓘ Electrical Specifications @ 25°C
- ⓘ Storage temp. : -40°C to +125°C
- ⓘ Operating temp. : -40°C to +125°C (Temp. rise included)
- ⓘ Resistance to solder heat : 245°C (10 sec.)
- ⓘ Magnetically shielded.
- ⓘ Weight : 3.40 g (ref.)
- ⓘ Moisture sensitivity Level 1



- ⓘ Part Numbering:
TL1206SG-100MD
TL= Inductor Code, 1206 = Size, SG = Surface Mount Green,
100 = Inductor Value, M = Tolerance, D = 13" Tape/Reel (600 pcs)

Peak Temp : 245°C max.
Max. Peak Temp - 5°C : 30sec max.
Max time above 217°C : 60sec~150sec max.





SHIELDED POWER INDUCTOR TL1206SG

Part Number	Inductance (μ H)	Test Freq. (MHz)	RDC (m Ω) max.	IDC (A) max.
TL1206SG-2R5M	2.5 \pm 20%	7.96	16.0	6.20
TL1206SG-3R3M	3.3 \pm 20%	7.96	18.5	7.60
TL1206SG-5R0M	5.0 \pm 20%	7.96	22.0	4.70
TL1206SG-7R5M	7.5 \pm 20%	7.96	25.0	3.80
TL1206SG-100M	10.0 \pm 20%	2.52	35.0	3.30
TL1206SG-120M	12.0 \pm 20%	2.52	38.0	3.00
TL1206SG-150M	15.0 \pm 20%	2.52	42.0	2.80
TL1206SG-180M	18.0 \pm 20%	2.52	50.0	2.50
TL1206SG-220M	22.0 \pm 20%	2.52	62.0	2.30
TL1206SG-270M	27.0 \pm 20%	2.52	68.0	2.00
TL1206SG-330Y	33.0 \pm 15%	2.52	90.0	1.90
TL1206SG-390Y	39.0 \pm 15%	2.52	100.0	1.75
TL1206SG-470Y	47.0 \pm 15%	2.52	130.0	1.60
TL1206SG-560Y	56.0 \pm 15%	2.52	155.0	1.45
TL1206SG-680Y	68.0 \pm 15%	2.52	170.0	1.30
TL1206SG-820Y	82.0 \pm 15%	2.52	185.0	1.20
TL1206SG-101Y	100.0 \pm 15%	0.796	220.0	1.10
TL1206SG-121Y	120.0 \pm 15%	0.796	260.0	1.00
TL1206SG-151K	150.0 \pm 10%	0.796	320.0	0.90
TL1206SG-181K	180.0 \pm 10%	0.796	380.0	0.80
TL1206SG-221K	220.0 \pm 10%	0.796	460.0	0.70
TL1206SG-271K	270.0 \pm 10%	0.796	520.0	0.65
TL1206SG-331K	330.0 \pm 10%	0.796	660.0	0.60
TL1206SG-391K	390.0 \pm 10%	0.796	870.0	0.55
TL1206SG-471K	470.0 \pm 10%	0.796	970.0	0.50
TL1206SG-561K	560.0 \pm 10%	0.796	1320.0	0.45
TL1206SG-681K	680.0 \pm 10%	0.796	1500.0	0.40
TL1206SG-821K	820.0 \pm 10%	0.796	1700.0	0.35
TL1206SG-102K	1000.0 \pm 10%	0.252	2300.0	0.30
TL1206SG-122K	1200.0 \pm 10%	0.252	2650.0	0.25
TL1206SG-152K	1500.0 \pm 10%	0.252	3500.0	0.20

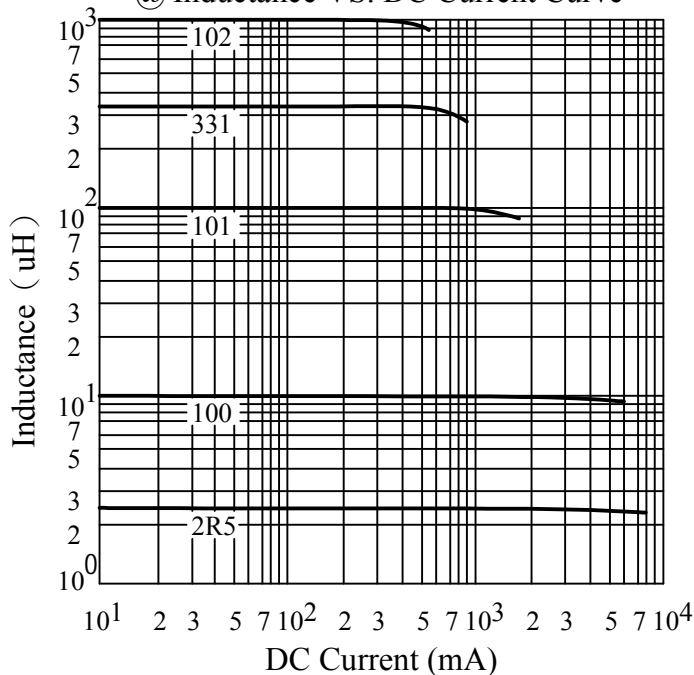
ⓘ IDC base on Temp. rise 40°C max.

ⓘ Δ L/L0A=10% max.

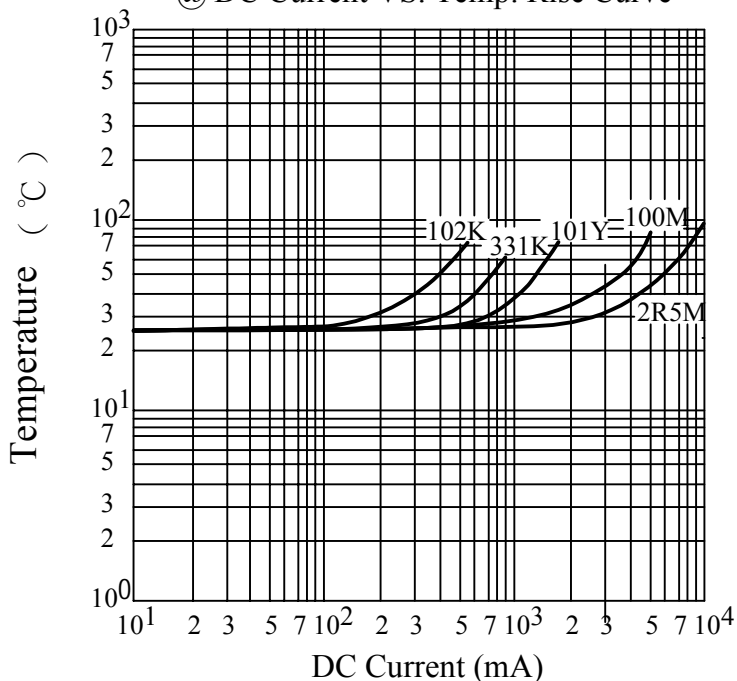


SHIELDED POWER INDUCTOR TL1206SG

@ Inductance VS. DC Current Curve



@ DC Current VS. Temp. Rise Curve

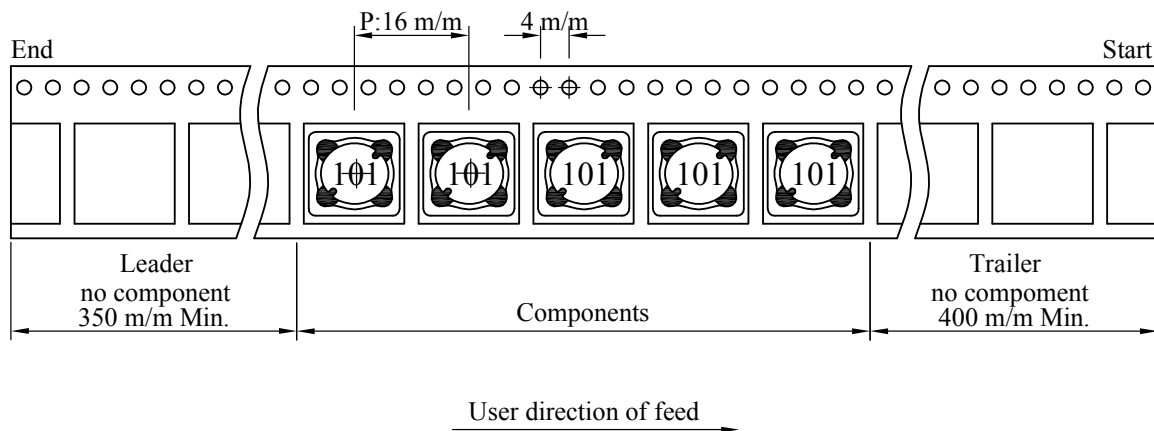
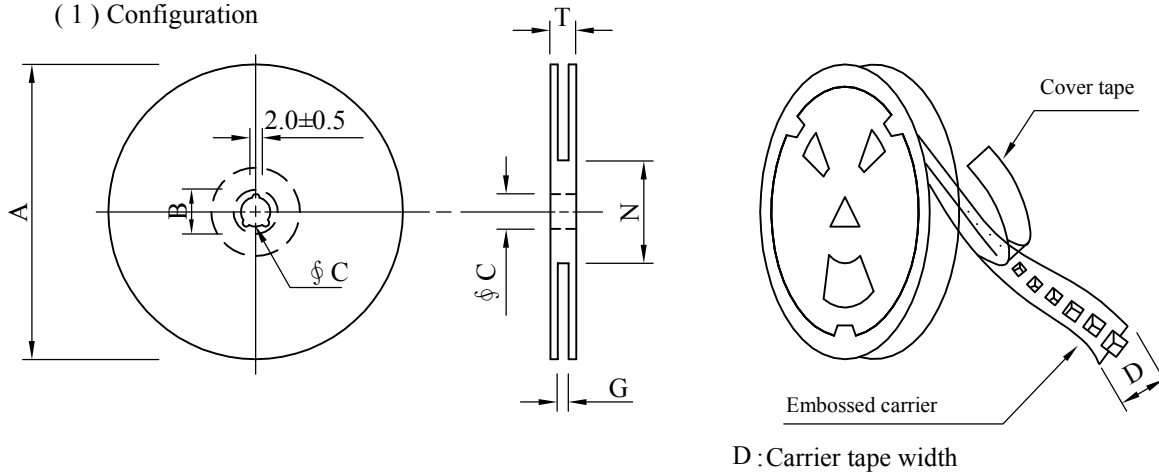




SHIELDED POWER INDUCTOR TL1206SG

Packaging information :

(1) Configuration



(2) Dimensions

Unit:m/m

Style	A	B	C	D	G	N	T
13 - 24	330	21±0.8	13±0.5	24	26 ⁺⁰	60 ⁻⁰	30.4

(3) Q'TY & G.W. Per package

Code	Inner : Reel			Outer : Carton		
	Q'TY (pcs)	G.W. (gw)	Style	Q'TY (pcs)	G.W. (Kg)	Size (cm)
D	600	2290	13 - 24	2,400	10.5	38 x 37 x 22