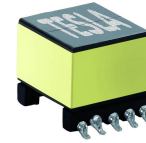


ADSL Transformer TD2004



- ⊕ Analog Devices AD20MSP930 Chip
- ⊕ EP 13 transformer
- ⊕ Per UL1950, EN60950 and IEC950

ELECTRICAL SPECIFICATIONS @ 25° C							
OCL (±6%)	Turn Ratio (±2%)	DCR (Max.)	DCR (Max.)	Hi-Pot	Leakage Inductance (Max.)	Total Harmonic Distortion (Max.)	Longitudinal Balance (Min.)
(10-7)	(1-4,tie 3,2):(10-7, tie 8,9)	(1-4, tie 2,3)	(10-7, tie 8,9)	(1-4, tie 2,3) to (10-7, tie 8,9)	(1-4, tie 2,3) to (10-7, tie 8,9)	dB	dB
10 kHz 100mV	10 kHz 100mV	Ω	Ω	1500 Vac 500 μA	μH	100 kHz, 5Vp-p	10 kHz- 1.1 MHz
1.75 mH	1:1.1	1.3	1.5	1 minute	7.5	- 80	50

