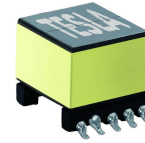




ADSL Transformer TD2003



- Texas Instruments Chip
- EP 13 transformer
- Per UL1950, EN60950 and IEC950

ELECTRICAL SPECIFICATIONS @ 25° C						
OCL (±6%)	Turn Ratio (±2%)	DCR (Max.)	DCR (Max.)	Hi-Pot	Leakege Inductance (Max.)	Total Harmonic Distortion (Min.)
Line	(1-4):(10-7) tie 3-2 and 8-9	(1-4) tie 3,2	(10-7) tie 8,9	(1-4) to (10-7) tie 3,2 and 8,9	(1-4) to (10-7) tie 3,2 and 8,9	dB
10 kHz 100mV	10 kHz 100mV	Ω	Ω	1500 Vac 500 μA	μH	100 kHz, 5Vp-p
400 μH	2:1	1.0	0.6	1 minute	5	- 80

