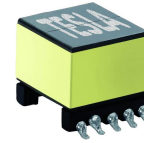


ADSL Transformer TD2002

- ⊕ Texas Instruments Chip
- ⊕ EP 13 transformer
- ⊕ Per UL1950, EN60950 and IEC950



ELECTRICAL SPECIFICATIONS @ 25° C

OCL (±6%)	Turn Ratio (±2%)	DCR (Max.)	DCR (Max.)	Hi-Pot	Leakege Inductance (Max.)	Total Harmonic Distortion (Min.)
Line	(1-4):(10-7)	(1-4)	(10-7)	(1-4) to (10-7)	(1-4) to (10-7)	dB
10 kHz 100mV	10 kHz 100mV	Ω	Ω	1500 Vac 500 μA	μH	100 kHz, 5Vp-p
75 μH	2:1	0.5	0.3	1 minute	5	- 80

