

Low Profile High Current Shielded Inductors TL4015SG Series

FEATURES:

- ⊕ Low height (1.5 mm)
- ⊕ Maximum part temperature - 40 °C to + 165 °C with (40° C rise) Irms current
- ⊕ Ambient temperature: -40° C to +125° C
- ⊕ RSH 260 °C
- ⊕ RoHS2 compliant, halogen free
- ⊕ AEC-Q200



Schematic



Specifications(25 °C):

Part Number ⁽¹⁾	INDUCTANCE ⁽²⁾ (μH)	DCR TYP. (mΩ)	DCR MAX. (mΩ)	SRF MHz	SATURATION CURRENT DC TYP. (A) ⁽³⁾			HEAT RATING CURRENT DC TYP. (A) ⁽⁴⁾	
					10%drop	20% drop	30% drop	20°C rise	40°C rise
TL4015SG-R18M	0.18	4.20	4.70	150	6.2	8.0	8.5	12.0	14.5
TL4015SG-R33M	0.33	6.80	7.50	112	5.5	7.0	7.5	9.6	13.2
TL4015SG-R47M	0.47	7.60	8.36	89	3.5	5.4	6.6	9.1	11.2
TL4015SG-R70M	0.70	9.50	10.45	70	3.3	5.3	6.3	7.2	10.1
TL4015SG-1R2M	1.20	18.80	20.70	61	2.6	3.7	4.5	5.1	7.1

Tolerance: M = ± 20 %

Notes

1. Part numbering
TL4015SG-1R2MD
TL- Inductor code 4015-series code, SG- SMD Green, 1R2 - 1.2 μH, M-Tolerance: ±20% , D- 13" reel
2. Inductance measured at 100 kHz at 25 °C
3. DC current (A) that will cause a 10% drop approximately 20%
4. DC current (A) that will cause an approximate ΔT of 40°C
The part temperature (ambient + temp. rise) should not exceed 165°C under worst case operating conditions.

Packaging

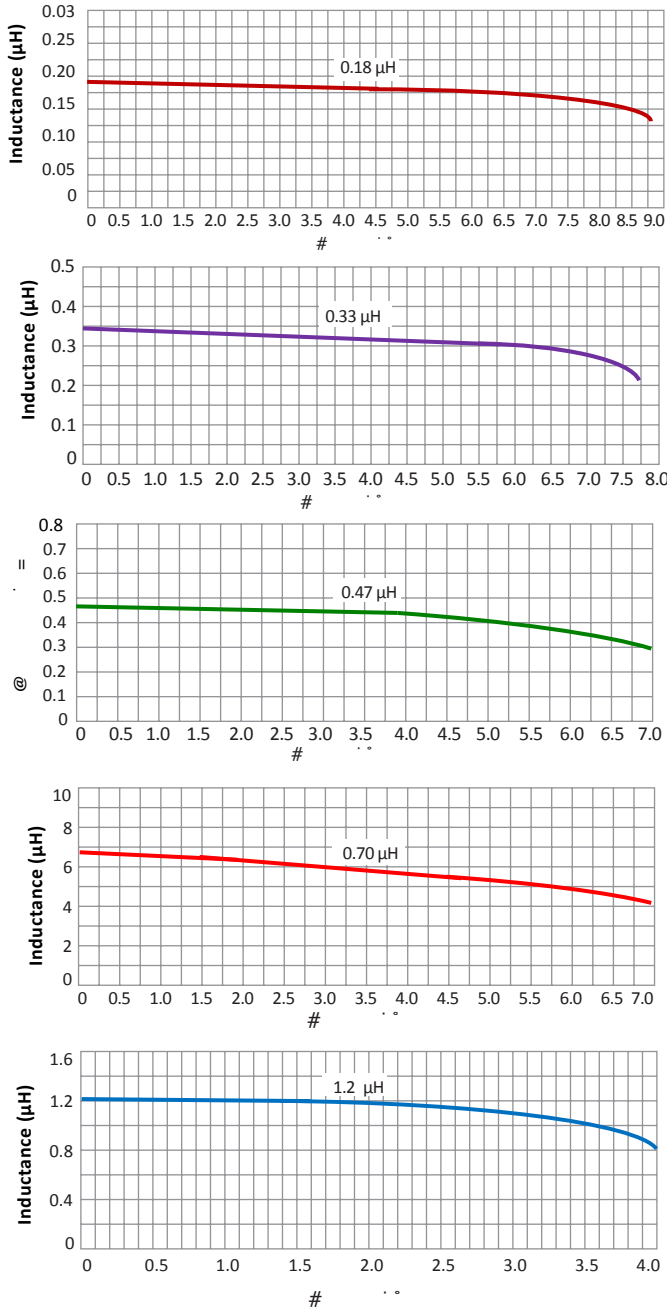
EIA-481 embossed plastic tape
B= Less than full reel machine ready ; C= 7" machine ready (1000 parts) ; D= 13" machine ready (4000 parts)

Termination:

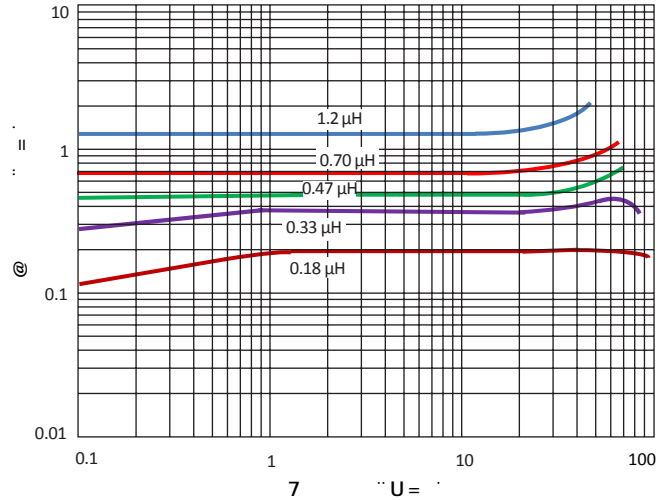
RoHS compliant tin silver over copper

Low Profile High Current Shielded Inductors TL4015SG Series

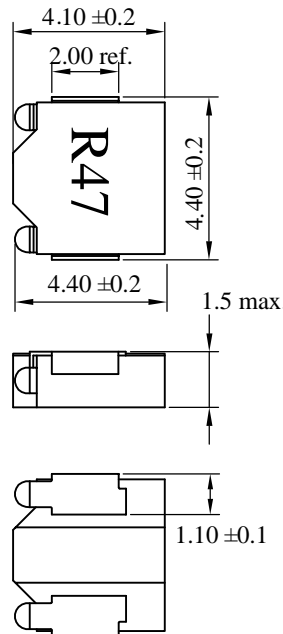
Current vs Inductance Curves



Typical Inductance vs Frequency

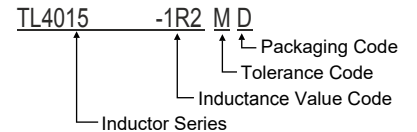


Dimensions

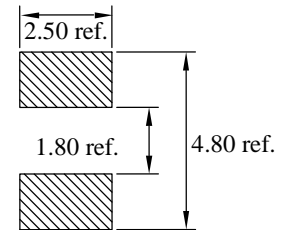


All Dimensions are in mm.

Ordering information



- Copper electrode: Sn Plating
- Resistance to solder heat: 260°C (Reflow)
- Ordering Information:
 TL 4015SG -xxxMB - Less than full machine ready
 TL 4015SG -xxxMC - 1000pcs (7" reel)
 TL 4015SG -xxxMD - 4000pcs (13" reel)
- Weight: 0.135 gms.



PCB Pad Layout